

# State of Wyoming Corner Record

(In compliance with the *CORNER PERPETUATION AND FILING ACT*, Wyoming Statutes, 1997 Section 33-29-140 et. seq., and the Rules and Regulations of the Board of Professional Engineers and Professional Land Surveyors)

Reverse side of this form may be used if more space is needed.

Record of original survey and citation of source of historical information (if corner is lost or obliterated). Description of corner monumentation evidence found and/or monument and accessories established to perpetuate the location of this corner. Sketch of relative location of monument, accessories, and reference points with course and distance to adjacent corner(s) (if determined in this survey). Method and rationale for reestablishment of lost or obliterated corner.

**LOCATION:** C-S-S 1/64 of Section 10, T14N, R65W, 6th P.M., Laramie County, Wyoming

**HISTORICAL DATA:** - No data, not part of the original survey.

- See Record of Survey for David Berry performed by Steil Surveying Services, LLC (1102 West 19th Street, P.O. Box 2073, Cheyenne, Wyoming 82003) file No. 96114, dated August, 1996.

**EVIDENCE FOUND:** No evidence found.

**MONUMENT & ACCESSORIES ESTABLISHED:**

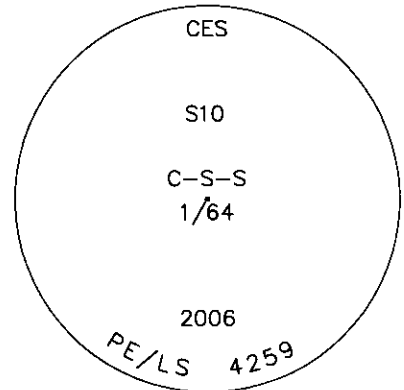
Set 3 1/4" aluminum cap on 5/8" X 24" rebar flush with ground and T-post about 7 inches to the North of monument.

**LAT / LONG:** 41°11'24.479"N, 104°38'44.798"W

## Monument location

SEE BACK

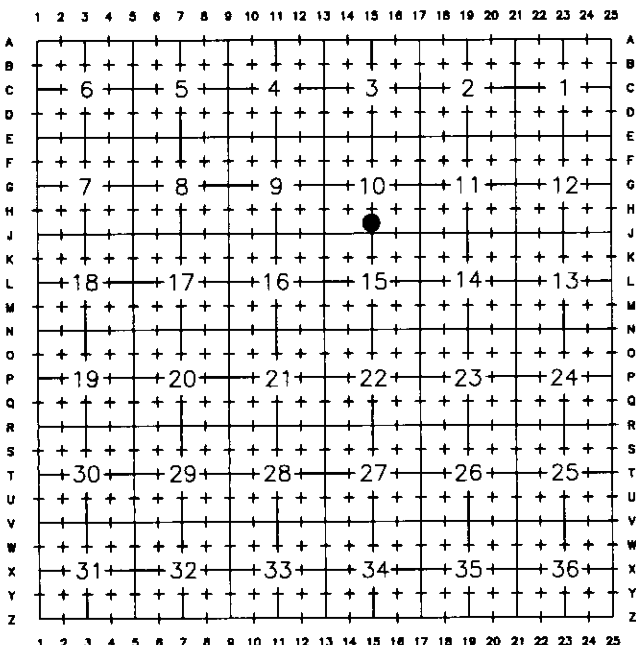
## Monument Inscription



Survey is based on a single static session, post processed by OPUS and a single RTK side shot to the monument. NAD83/93

Date of Field Work: December 2006 Office Reference: 1263.00

## Cross Index Plat



This corner record was prepared by me or under my direction and supervision.

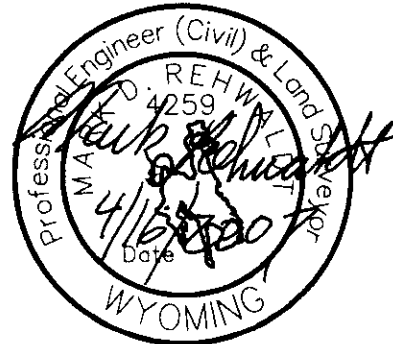
SEAL & SIGNATURE

### **COFFEY ENGINEERING & SURVEYING, L.L.C.**

903 East Grand Avenue  
Laramie, Wyoming 82070  
(307) 742-7425



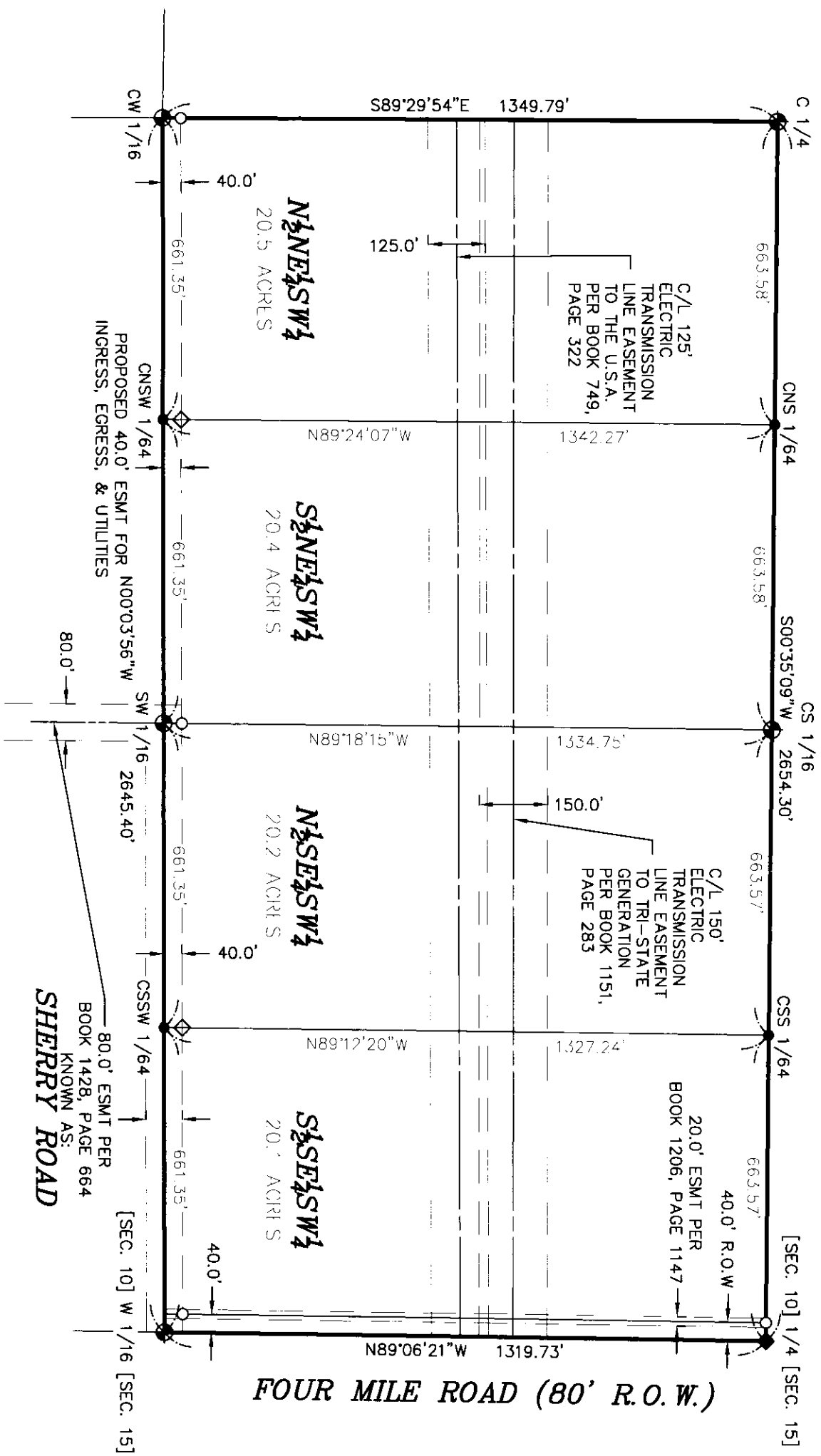
*Mark D. Rehwaldt, PE/LS #4259*



RECORDED 4/23/2007 AT 12:55 PM REC# 473162 BK# 2003 PG# 246  
DEBRA K. LATHROP, CLERK OF LARAMIE COUNTY, WY PAGE 1 OF 2

Corner Name C-S-S 1/64 Section 10, T 14 N, R 65 W, 6th P.M.  
County: LARAMIE Wyoming  
SBRPEPLS/PLSW: March 1994; PLSW January 1998

Cross-Index No.: HJ-15



RECORDED 4/23/2007 AT 12:55 PM REC# 473162 BK# 2003 PG# 247  
 DEBRA K. LATHROP, CLERK OF LARAHIE COUNTY, WY PAGE 2 OF 2



- ⊕ - FOUND 2.5" ALUMINUM CAP STAMPED "STEIL SURVEYING SERVICES PLS 2500"
- - FOUND 1.5" ALUMINUM CAP STAMPED "SSS PLS 2500"
- ◆ - FOUND 5/8" REBAR
- - SET 3.25" ALUMINUM CAP STAMPED PE/LS 4259
- ◇ - SET 1.5" ALUMINUM CAP STAMPED PE/LS 4259

SCALE: 1 IN = 300 FT

**FOUR MILE ROAD (80' R.O.W.)**

**SHERRY ROAD**